

## Cynomolgus LAG-3 / CD223 Protein, Mouse IgG2a Fc Tag

Catalog # LA3-C52A0

For Research Use Only

### Description

**Source** Cynomolgus LAG-3 / CD223, Mouse IgG2a Fc Tag (LA3-C52A0) is expressed from human 293 cells (HEK293). It contains AA Ala 18 - His 449 (Accession # XP\_005570011.1). Predicted N-terminus: Ala 18

**Predicted N-terminus** Ala 18

**Protein Structure**

LAG-3(Ala 18 - His 449) XP_005570011.1	mFc(Glu 98 - Lys 330) P01863
---	---------------------------------

**Molecular Characterization** This protein carries a mouse IgG2a Fc tag at the C-terminus. The protein has a calculated MW of 73.7 kDa. The protein migrates as 78-92 kDa under reducing (R) condition (SDS-PAGE) due to glycosylation.

**Endotoxin** Less than 1.0 EU per µg by the LAL method.

**Purity** >85% as determined by SDS-PAGE.

**Bioactivity** Measured by its binding ability in a functional ELISA. Immobilized Cynomolgus LAG-3, mouse IgG2a Fc tag (Cat. No. LA3-C52A0) at 0.5 µg/mL (100 µL/well) can bind Anti-Human LAG3 MAb, Human IgG1 with a linear range of 0.156-5 µg/mL (QC tested).

### Formulation and Storage

**Formulation** Lyophilized from 0.22 µm filtered solution in 50 mM Tris, 100 mM Glycine, pH7.5. Normally trehalose is added as protectant before lyophilization.

Contact us for customized product form or formulation.

**Reconstitution** Please see Certificate of Analysis for specific instructions. For best performance, we strongly recommend you to follow the reconstitution protocol provided in the CoA.

**Storage** For long term storage, the product should be stored at lyophilized state at -20°C or lower. Please avoid repeated freeze-thaw cycles.

No activity loss was observed after storage at:

- 4-8°C for 12 months in lyophilized state;
- -70°C for 3 months under sterile conditions after reconstitution.

### Background

**Background** Lymphocyte activation gene 3 protein (LAG3) is also known as CD antigen CD223 and protein FDC, which belongs to immunoglobulin (Ig) superfamily and contains 4 extracellular Ig-like domains. The LAG3 gene contains 8 exons. The sequence data, exon/intron organization, and chromosomal localization all indicate a close relationship of LAG3 to CD4. LAG3 /CD223 involved in lymphocyte activation. LAG3 /CD223 binds to HLA class-II antigens.

**References** (1) Triebel F., et al., 1990, J. Exp. Med. 171:1393-1405.  
(2) Baixeras E., et al., 1992, J. Exp. Med. 176:327-337.

Please contact us at [TechSupport@acrobiosystems.com](mailto:TechSupport@acrobiosystems.com), if you have any questions about this product.

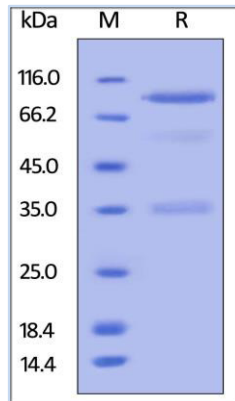
## Cynomolgus LAG-3 / CD223 Protein, Mouse IgG2a Fc Tag

Catalog # LA3-C52A0

For Research Use Only

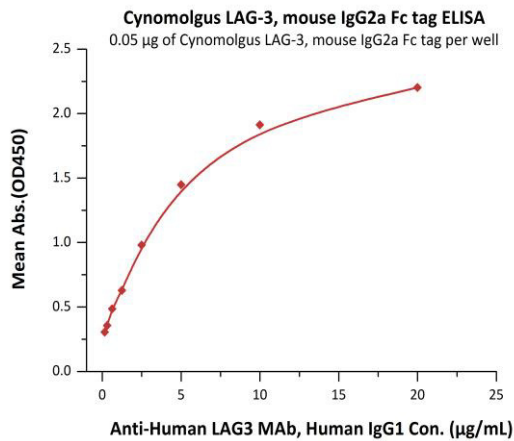
### Assay Data

#### SDS-PAGE Data



Cynomolgus LAG-3 / CD223, Mouse IgG2a Fc Tag on SDS-PAGE under reducing (R) condition. The gel was stained overnight with Coomassie Blue. The purity of the protein is greater than 85%.

#### Bioactivity Data



Immobilized Cynomolgus LAG-3, mouse IgG2a Fc tag (Cat. No. LA3-C52A0) at 0.5 µg/mL (100 µL/well) can bind Anti-Human LAG3 MAb, Human IgG1 with a linear range of 0.156-5 µg/mL (QC tested).