



Synonym

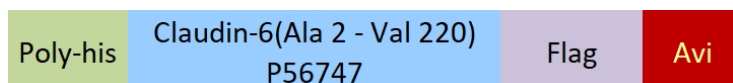
Claudin-6,CLDN6

Source

Biotinylated Human Claudin-6 Full Length Protein, His,Avitag™&Flag Tag(CL6-H85D4) is expressed from Baculovirus-Insect cells. It contains AA Ala 2 - Val 220 (Accession # [P56747](#)).

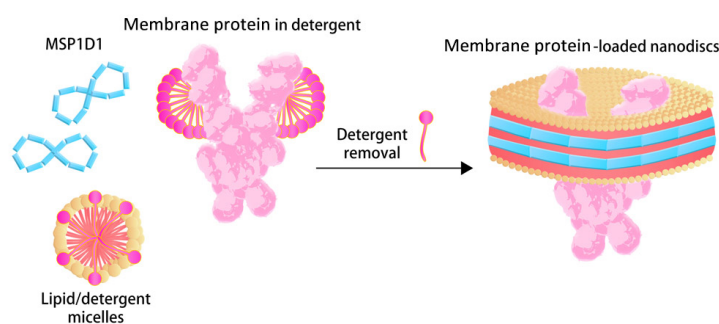
Predicted N-terminus: Met

Molecular Characterization



This protein carries a polyhistidine tag at the N-terminus and a Flag tag at the C-terminus followed by an Avi tag (Avitag™). The protein has a calculated MW of 28.6 kDa.

Nanodiscs are a new class of model membranes that are being used to solubilize and study a range of integral membrane proteins and membrane-associated proteins. The Nanodisc bilayer is bounded by a membrane scaffold protein (MSP1D1) coat that confers enhanced stability and a narrow particle size distribution.



The nanodisc assembles from a mixture of full length membrane protein in detergent, phospholipid micelles and membrane scaffold protein(MSP1D1) upon removal of the detergent.

Labeling

Biotinylation of this product is performed using Avitag™ technology. Briefly, the single lysine residue in the Avitag is enzymatically labeled with biotin.

Protein Ratio

Passed as determined by the HABA assay / binding ELISA.

*The isotype control of empty/mock nanodisc (Cat. No. [APO-H81Q5](#)) is sold separately and not included in protein, you can follow [this link](#) for product information.

Purity

>80% as determined by SDS-PAGE.

Formulation

Supplied as 0.2 µm filtered solution in 50 mM HEPES, 150 mM NaCl, pH7.5 with trehalose as protectant.

Contact us for customized product form or formulation.

Shipping

This product is supplied and shipped with dry ice, please inquire the shipping cost.

Storage

Please avoid repeated freeze-thaw cycles.

This product is stable after storage at:

- The product MUST be stored at -70°C or lower upon receipt;
- -70°C for 3 months under sterile conditions.

Bioactivity-ELISA

Discounts, Gifts,
and more!

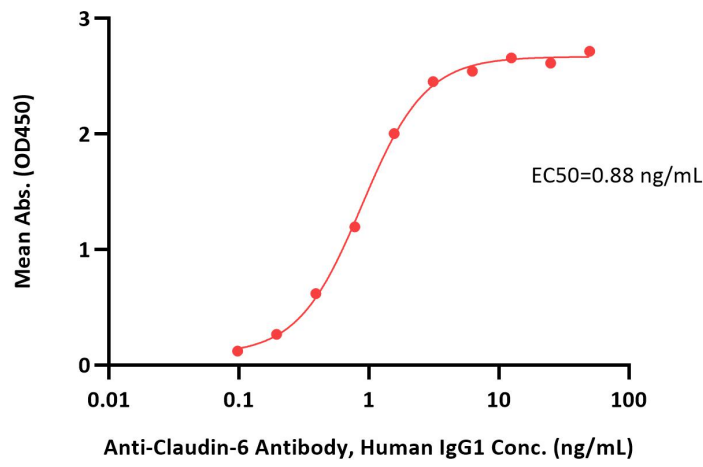


Biotinylated Human Claudin-6 Full Length Protein, His,Avitag™&Flag Tag (Nanodisc)

Catalog # CL6-H85D4

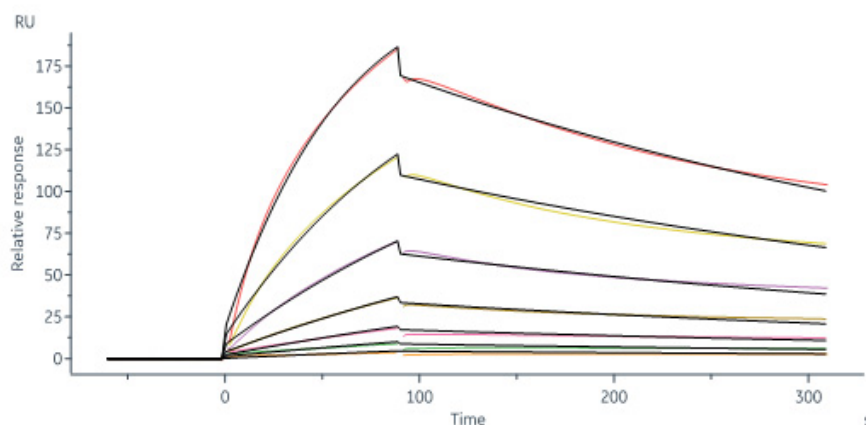


Biotinylated Human Claudin-6 Full Length Protein, His,Avitag™&Flag Tag ELISA
0.1 µg of Biotinylated Human Claudin-6 Full Length Protein, His,Avitag™&Flag Tag per well



Immobilized Biotinylated Human Claudin-6 Full Length Protein, His,Avitag™&Flag Tag (Cat. No. CL6-H85D4) at 1 µg/mL (100 µL/well) on streptavidin (Cat. No. STN-N5116) precoated (0.5 µg/well) plate can bind Anti-Claudin-6 Antibody, Human IgG1 with a linear range of 0.1-2 ng/mL (QC tested).

Bioactivity-SPR



Anti-Claudin 6 antibody, Human IgG1 captured on Protein A Chip can bind Biotinylated Human Claudin-6 Full Length Protein, His,Avitag™&FlagTag (Cat. No. CL6-H85D4) with an affinity constant of 36.5 nM as determined in a SPR assay (Biacore 8K) (Routinely tested).

Background

Tight junctions represent one mode of cell-to-cell adhesion in epithelial or endothelial cell sheets, forming continuous seals around cells and serving as a physical barrier to prevent solutes and water from passing freely through the paracellular space. These junctions are comprised of sets of continuous networking strands in the outwardly facing cytoplasmic leaflet, with complementary grooves in the inwardly facing extracytoplasmic leaflet. Claudin-6, also known as CLDN6, is a multipass transmembrane protein in the Claudin family. Claudin-6 is expressed by epithelial cells where it participates in tissue development and the maintenance of tight junction integrity. And it is one of the entry cofactors for hepatitis C virus. The methylation of CLDN6 may be involved in esophageal tumorigenesis. The gene of CLDN6 is adjacent to another family member CLDN9 on chromosome 16.

Discounts, Gifts,
and more!



➤ www.acrobiosystems.com