



Synonym

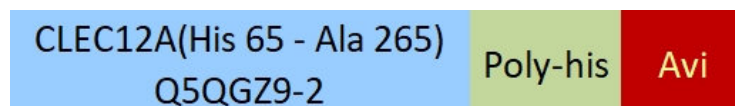
CLEC12A,MICL,CLL-1,CLL1,DCAL2,DCAL-2,CD371

Source

Biotinylated Human CLEC12A Protein, His,Avitag(CLA-H82E9) is expressed from human 293 cells (HEK293). It contains AA His 65 - Ala 265 (Accession # [Q5QGZ9-2](#)).

Predicted N-terminus: His 65

Molecular Characterization



This protein carries a polyhistidine tag at the C-terminus, followed by an Avi tag (Avitag™).

The protein has a calculated MW of 27.3 kDa. The protein migrates as 35-53 kDa when calibrated against [Star Ribbon Pre-stained Protein Marker](#) under reducing (R) condition (SDS-PAGE) due to glycosylation.

Labeling

Biotinylation of this product is performed using Avitag™ technology. Briefly, the single lysine residue in the Avitag is enzymatically labeled with biotin.

Protein Ratio

Passed as determined by the HABA assay / binding ELISA.

Endotoxin

Less than 1.0 EU per µg by the LAL method.

Purity

>90% as determined by SDS-PAGE.

>90% as determined by SEC-MALS.

Formulation

Lyophilized from 0.22 µm filtered solution in PBS, pH7.4 with trehalose as protectant.

Contact us for customized product form or formulation.

Reconstitution

Please see Certificate of Analysis for specific instructions.

For best performance, we strongly recommend you to follow the reconstitution protocol provided in the CoA.

Storage

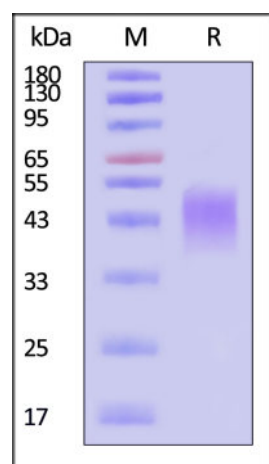
For long term storage, the product should be stored at lyophilized state at -20°C or lower.

Please avoid repeated freeze-thaw cycles.

This product is stable after storage at:

- -20°C to -70°C for 12 months in lyophilized state;
- -70°C for 3 months under sterile conditions after reconstitution.

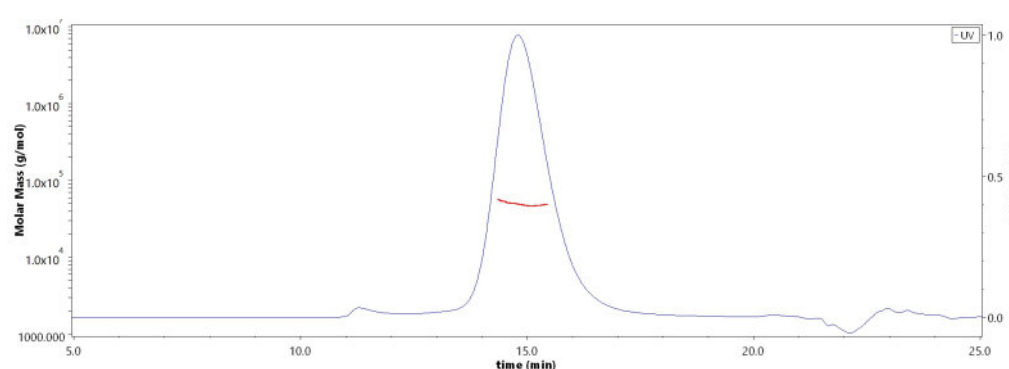
SDS-PAGE



Biotinylated Human CLEC12A Protein, His,Avitag on SDS-PAGE under reducing (R) condition. The gel was stained with Coomassie Blue. The purity of the protein is greater than 90% (With [Star Ribbon Pre-stained Protein Marker](#)).

Bioactivity-ELISA

SEC-MALS

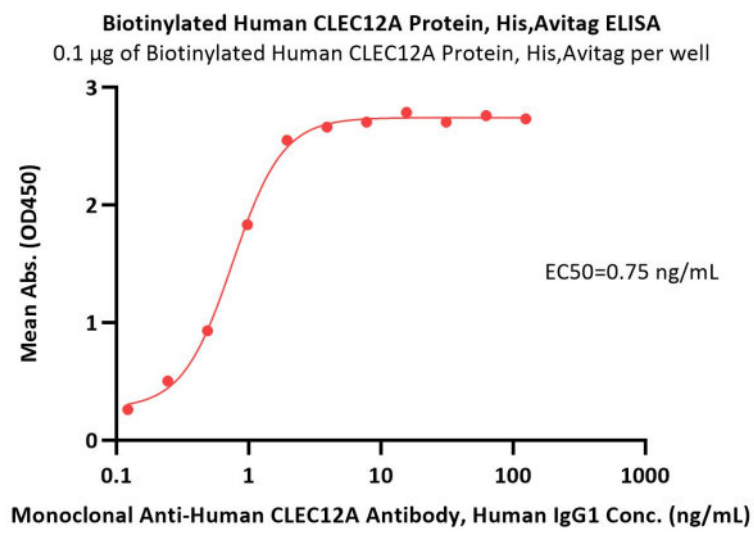


The purity of Biotinylated Human CLEC12A Protein, His,Avitag (Cat. No. CLA-H82E9) is more than 90% and the molecular weight of this protein is around 40-55 kDa verified by SEC-MALS.

Report

Discounts, Gifts,
and more!





Immobilized Biotinylated Human CLEC12A Protein, His,Avitag (Cat. No. CLA-H82E9) at 1 µg/mL (100 µL/well) on streptavidin (Cat. No. STN-N5116) precoated (0.5 µg/well) plate can bind Monoclonal Anti-Human CLEC12A Antibody, Human IgG1 with a linear range of 0.1-2 ng/mL (QC tested).

Background

CLEC12A (C-type lectin domain family 12 member A) is also known as CLL1, DCAL2, MICL. Clec12a is an inhibitory receptor for uric acid crystals that regulates inflammation in response to cell death. Cell surface receptor that modulates signaling cascades and mediates tyrosine phosphorylation of target MAP kinases. Evidence of distinct disease propagating stem cells in myelodysplastic syndrome (MDS) has emerged in recent years. The role of CLEC12A in MDS, however, remains to be elucidated. Furthermore, CLEC12A has been proposed as a promising marker of leukaemic stem cells in AML.

Clinical and Translational Updates

Discounts, Gifts,
and more!

