

Mouse Clec2f Protein, Fc Tag (MALS verified)

Catalog # CLF-M5254



Source

Mouse Clec2f Protein, Fc Tag (CLF-M5254) is expressed from human 293 cells (HEK293). It contains AA Thr 63 - Cys 196 (Accession # [Q8VI21-1](#)).
Predicted N-terminus: Thr 63

Molecular Characterization

Clec2f(Thr 63 - Cys 196) Q8VI21-1	Fc(Pro 100 - Lys 330) P01857
--------------------------------------	---------------------------------

This protein carries a human IgG1 Fc tag at the C-terminus.

The protein has a calculated MW of 42.2 kDa. The protein migrates as 53-63 kDa when calibrated against [Star Ribbon Pre-stained Protein Marker](#) under reducing (R) condition (SDS-PAGE) due to glycosylation.

Endotoxin

Less than 1.0 EU per µg by the LAL method.

Purity

>95% as determined by SDS-PAGE.
>95% as determined by SEC-MALS.

Formulation

Lyophilized from 0.22 µm filtered solution in PBS, pH7.4 with trehalose as protectant.

Contact us for customized product form or formulation.

Reconstitution

Please see Certificate of Analysis for specific instructions.

For best performance, we strongly recommend you to follow the reconstitution protocol provided in the CoA.

Storage

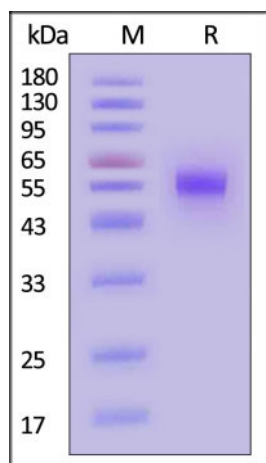
For long term storage, the product should be stored at lyophilized state at -20°C or lower.

Please avoid repeated freeze-thaw cycles.

This product is stable after storage at:

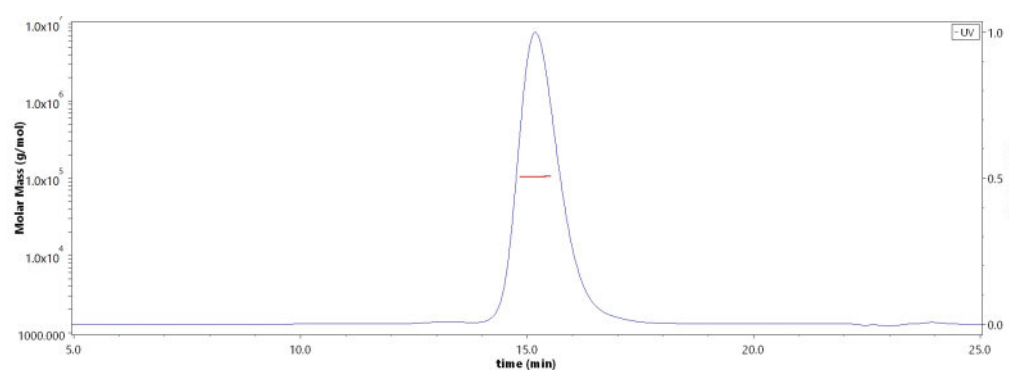
- -20°C to -70°C for 12 months in lyophilized state;
- -70°C for 3 months under sterile conditions after reconstitution.

SDS-PAGE



Mouse Clec2f Protein, Fc Tag on SDS-PAGE under reducing (R) condition. The gel was stained with Coomassie Blue. The purity of the protein is greater than 95% (With [Star Ribbon Pre-stained Protein Marker](#)).

SEC-MALS



The purity of Mouse Clec2f Protein, Fc Tag (Cat. No. CLF-M5254) is more than 95% and the molecular weight of this protein is around 90-110 kDa verified by SEC-MALS.

[Report](#)

Background

CLEC2f (C-type lectin domain family 2 member f) is also known as Clec2f-ps, Clr-c, Clrc, Clrz. Clec2h is a receptor for lectin-type cell surface.

Discounts, Gifts,
and more!



Mouse Clec2f Protein, Fc Tag (MALS verified)

Catalog # CLF-M5254



Clinical and Translational Updates

Please contact us via TechSupport@acrobiosystems.com if you have any question on this product.

Discounts, Gifts,
and more!



www.acrobiosystems.com