

Human DLL3 Protein, His Tag (MALS verified)

Catalog # DL3-H52H4



Synonym

Delta3,delta-like 3 (Drosophila),delta-like protein 3,DLL3,Pudgy,SCDO1,SCDO1delta3

Source

Human DLL3, His Tag(DL3-H52H4) is expressed from human 293 cells (HEK293). It contains AA Ala 27 - Leu 492 (Accession # [Q9NYJ7-1](#)). Predicted N-terminus: Ala 27

Molecular Characterization

DLL3(Ala 27 - Leu 492)
Q9NYJ7-1 Poly-his

This protein carries a polyhistidine tag at the C-terminus.

The protein has a calculated MW of 50.4 kDa. The protein migrates as 50-55 kDa under reducing (R) condition (SDS-PAGE) due to glycosylation.

Endotoxin

Less than 1.0 EU per µg by the LAL method / rFC method.

Purity

>95% as determined by SDS-PAGE.

>95% as determined by SEC-MALS.

Formulation

Lyophilized from 0.22 µm filtered solution in PBS with Arginine, pH7.4 with trehalose as protectant.

Contact us for customized product form or formulation.

Reconstitution

Please see Certificate of Analysis for specific instructions.

For best performance, we strongly recommend you to follow the reconstitution protocol provided in the CoA.

Storage

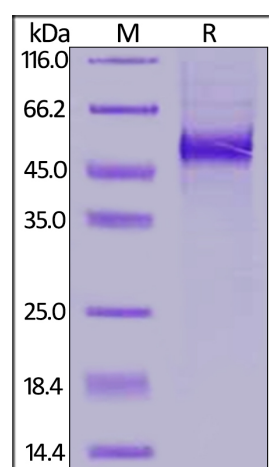
For long term storage, the product should be stored at lyophilized state at -20°C or lower.

Please avoid repeated freeze-thaw cycles.

This product is stable after storage at:

- -20°C to -70°C for 12 months in lyophilized state;
- -70°C for 3 months under sterile conditions after reconstitution.

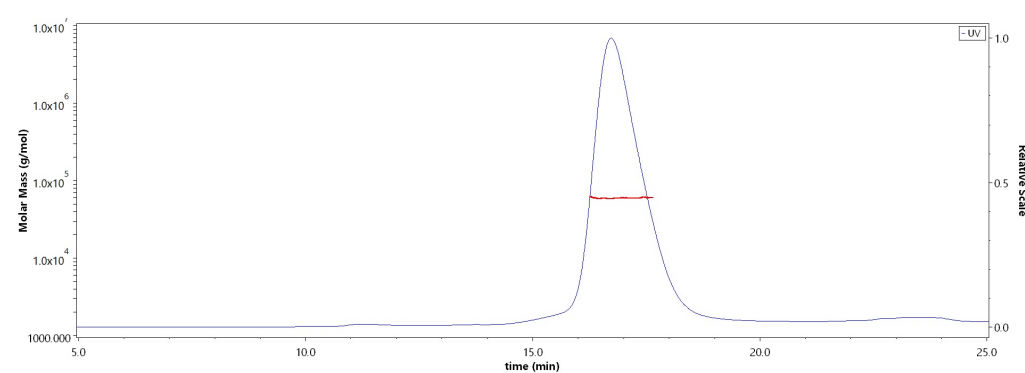
SDS-PAGE



Human DLL3, His Tag on SDS-PAGE under reducing (R) condition. The gel was stained with Coomassie Blue. The purity of the protein is greater than 95%.

Bioactivity-ELISA

SEC-MALS



The purity of Human DLL3, His Tag (Cat. No. DL3-H52H4) is more than 95% and the molecular weight of this protein is around 55-75 kDa verified by SEC-MALS.

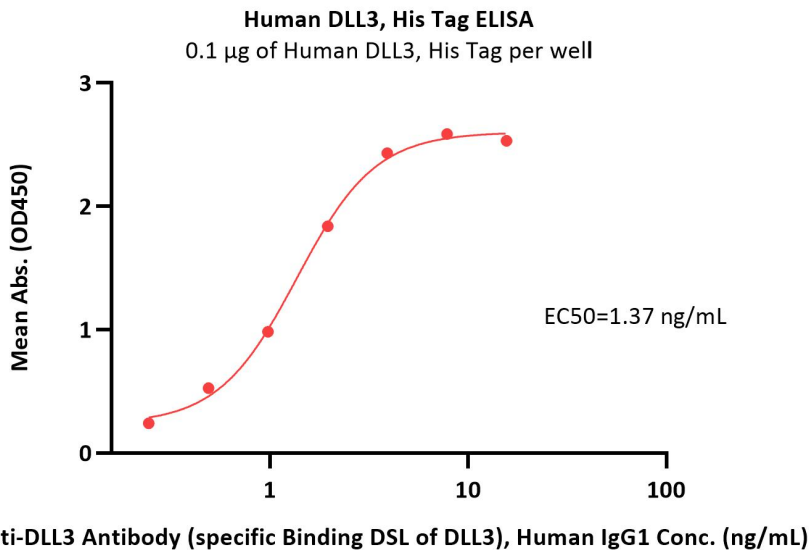
[Report](#)

Discounts, Gifts,
and more!

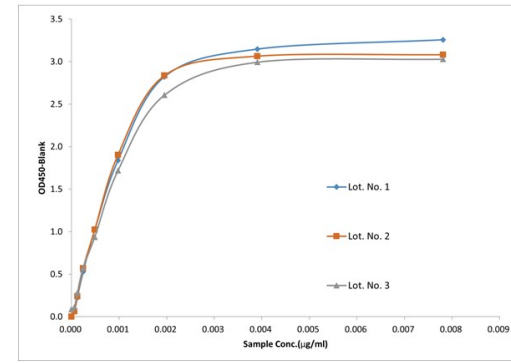


Human DLL3 Protein, His Tag (MALS verified)

Catalog # DL3-H52H4

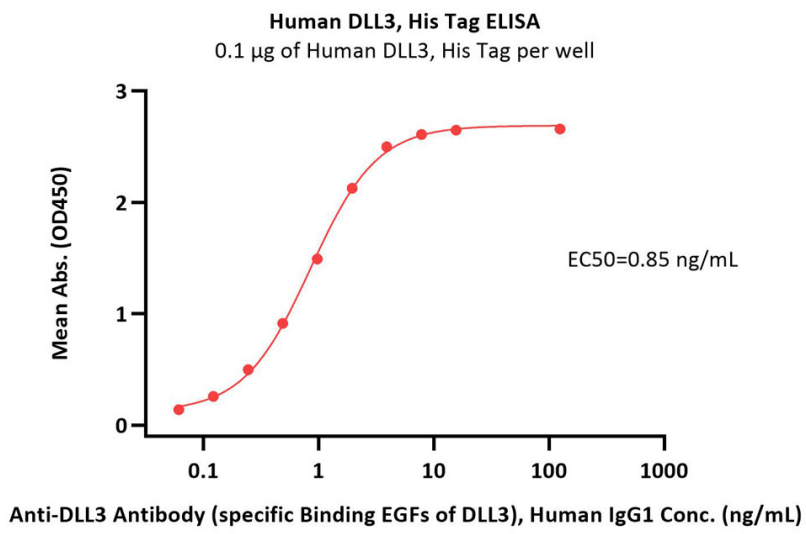


Batch consistency



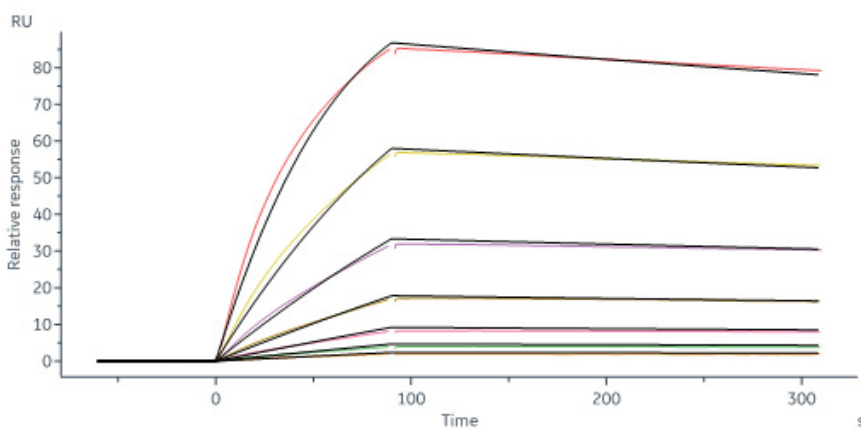
Lot. No.	EC50(µg/mL)
Lot. No. 1	0.0008
Lot. No. 2	0.0007
Lot. No. 3	0.0009

Immobilized Human DLL3, His Tag (Cat. No. DL3-H52H4) at 1 µg/mL (100 µL/well) can bind Anti-DLL3 Antibody (specific Binding DSL of DLL3), Human IgG1 with a linear range of 0.2-2 ng/mL (QC tested).



Immobilized Human DLL3, His Tag (Cat. No. DL3-H52H4) at 1 µg/mL (100 µL/well) can bind Anti-DLL3 Antibody (specific Binding EGFs of DLL3), Human IgG1 with a linear range of 0.01-2 ng/mL (Routinely tested).

Bioactivity-SPR



Bispecific T-cell Engager captured on Protein A Chip can bind Human DLL3, His Tag (Cat. No. DL3-H52H4) with an affinity constant of 1.14 nM as determined in a SPR assay (Biacore 8K) (Routinely tested).

Discounts, Gifts,
and more!



➔ www.acrobiosystems.com

Human DLL3 Protein, His Tag (MALS verified)

Catalog # DL3-H52H4



Background

Delta-like protein 3 (DLL3) is a transmembrane protein that belongs to the Delta/Serrate/Lag-2 (DSL) family of Notch ligands. May be required to divert neurons along a specific differentiation pathway. Plays a role in the formation of somite boundaries during segmentation of the paraxial mesoderm. DLL3 protein is expressed on the surface of tumor cells but not in normal adult tissues.

Discounts, Gifts,
and more!



www.acrobiosystems.com

4/21/2025