



## Synonym

Coagulation factor XI,FXI,PTA,F11

## Source

Rhesus macaque Coagulation factor XI Protein, His Tag(FXI-C52H3) is expressed from human 293 cells (HEK293). It contains AA Glu 19 - Ala 624 (Accession # [G7MSF8-1](#)).

Predicted N-terminus: Glu 19

## Molecular Characterization

FXI(Glu 19 - Ala 624)  
G7MSF8-1 Poly-his

This protein carries a polyhistidine tag at the C-terminus.

The protein has a calculated MW of 69.8 kDa. The protein migrates as 80-90 kDa when calibrated against [Star Ribbon Pre-stained Protein Marker](#) under reducing (R) condition (SDS-PAGE) due to glycosylation.

## Endotoxin

Less than 1.0 EU per µg by the LAL method / rFC method.

## Purity

>90% as determined by SDS-PAGE.

## Formulation

Lyophilized from 0.22 µm filtered solution in 20 mM HEPES,150 mM NaCl,pH7.5 with trehalose as protectant.

Contact us for customized product form or formulation.

## Reconstitution

Please see Certificate of Analysis for specific instructions.

*For best performance, we strongly recommend you to follow the reconstitution protocol provided in the CoA.*

## Storage

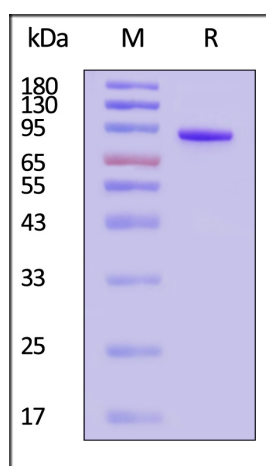
For long term storage, the product should be stored at lyophilized state at -20°C or lower.

*Please avoid repeated freeze-thaw cycles.*

This product is stable after storage at:

- -20°C to -70°C for 12 months in lyophilized state;
- -70°C for 3 months under sterile conditions after reconstitution.

## SDS-PAGE

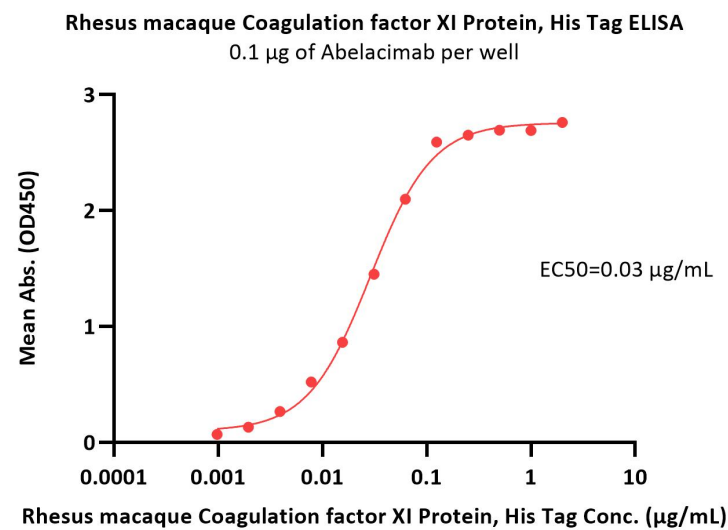
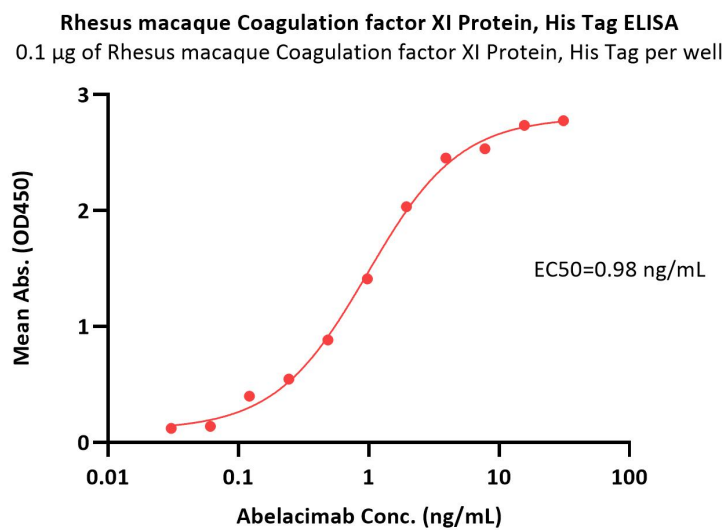


Rhesus macaque Coagulation factor XI Protein, His Tag on SDS-PAGE under reducing (R) condition. The gel was stained with Coomassie Blue. The purity of the protein is greater than 90% (With [Star Ribbon Pre-stained Protein Marker](#)).

## Bioactivity-ELISA

Discounts, Gifts,  
and more!

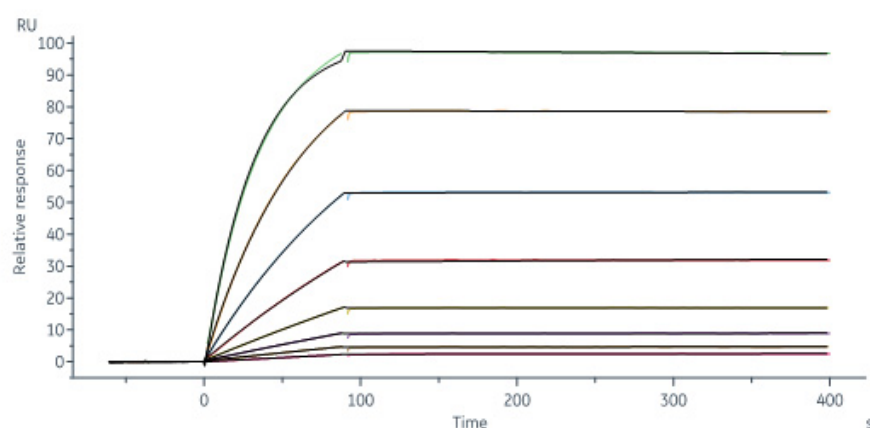




Immobilized Rhesus macaque Coagulation factor XI Protein, His Tag (Cat. No. FXI-C52H3) at 1 µg/mL (100 µL/well) can bind Abelacimab with a linear range of 0.03-2 ng/mL (QC tested).

Immobilized Abelacimab at 1 µg/mL (100 µL/well) can bind Rhesus macaque Coagulation factor XI Protein, His Tag (Cat. No. FXI-C52H3) with a linear range of 0.001-0.063 µg/mL (Routinely tested).

### Bioactivity-SPR



Abelacimab captured on Protein A Chip can bind Rhesus macaque Coagulation factor XI, His Tag (Cat. No. FXI-C52H3) with an affinity constant of 22.4 pM as determined in a SPR assay (Biacore 8K) (Routinely tested).

### Bioactivity

Measured by its ability to cleave the fluorogenic peptide substrate, t-butyloxycarbonyl-Ile-Glu-Gly-Arg-7-amido-4-methylcoumarin (Boc-IEGR-AMC). The specific activity is >110 pmol/min/µ (QC tested).

### Background

This protein is present in plasma as a zymogen, which is a unique plasma coagulation enzyme because it exists as a homodimer consisting of two identical polypeptide chains linked by disulfide bonds. During activation of the plasma factor XI, an internal peptide bond is cleaved by factor XIIa (or XII) in each of the two chains, resulting in activated factor XIa, a serine protease composed of two heavy and two light chains held together by disulfide bonds. This activated plasma factor XI triggers the middle phase of the intrinsic pathway of blood coagulation by activating factor IX. Defects in this factor lead to Rosenthal syndrome, a blood coagulation abnormality

Discounts, Gifts, and more!

