

Human Growth Hormone R (GHR) Protein, His Tag (MALS verified)

Catalog # GHR-H5222



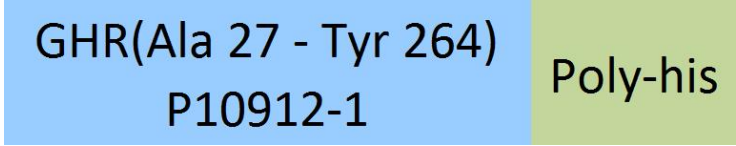
Synonym

GHR,GHBP,GH receptor

Source

Human GHR, His Tag(GHR-H5222) is expressed from human 293 cells (HEK293). It contains AA Ala 27 - Tyr 264 (Accession # [P10912-1](#)).  
Predicted N-terminus: Ala 27

Molecular Characterization



This protein carries a polyhistidine tag at the C-terminus.  
The protein has a calculated MW of 29.6 kDa. The protein migrates as 40-55 kDa when calibrated against [Star Ribbon Pre-stained Protein Marker](#) under reducing (R) condition (SDS-PAGE) due to glycosylation.

Endotoxin

Less than 1.0 EU per µg by the LAL method / rFC method.

Purity

>95% as determined by SDS-PAGE.  
>90% as determined by SEC-MALS.

Formulation

Lyophilized from 0.22 µm filtered solution in PBS, pH7.4 with trehalose as protectant.  
Contact us for customized product form or formulation.

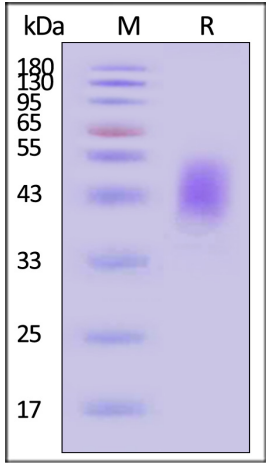
Reconstitution

Please see Certificate of Analysis for specific instructions.  
*For best performance, we strongly recommend you to follow the reconstitution protocol provided in the CoA.*

Storage

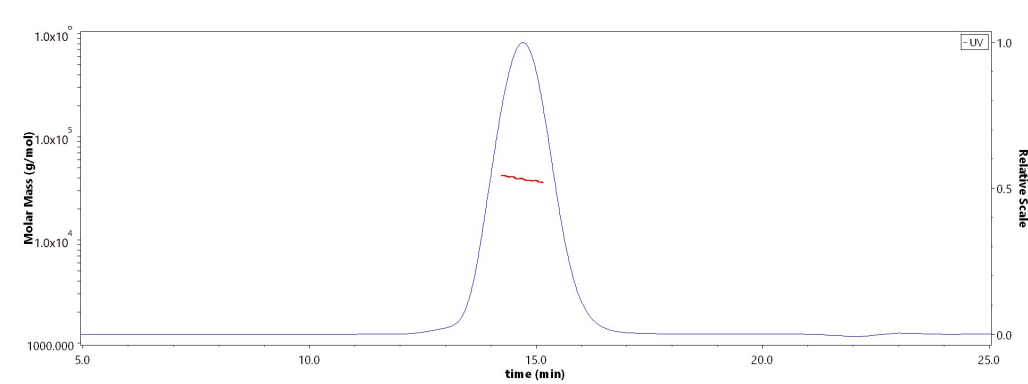
For long term storage, the product should be stored at lyophilized state at -20°C or lower.  
*Please avoid repeated freeze-thaw cycles.*  
This product is stable after storage at:  
• -20°C to -70°C for 12 months in lyophilized state;  
• -70°C for 3 months under sterile conditions after reconstitution.

SDS-PAGE



Human GHR, His Tag on SDS-PAGE under reducing (R) condition. The gel was stained with Coomassie Blue. The purity of the protein is greater than 95% (With [Star Ribbon Pre-stained Protein Marker](#)).

SEC-MALS



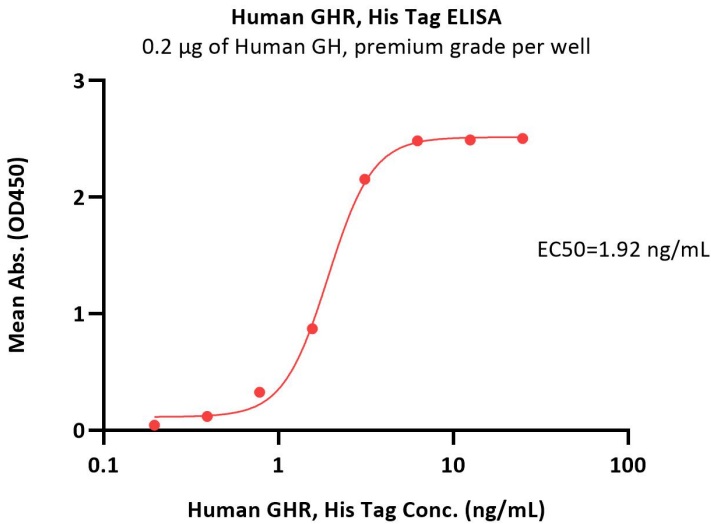
The purity of Human GHR, His Tag (Cat. No. GHR-H5222) is more than 90% and the molecular weight of this protein is around 35-50 kDa verified by SEC-MALS.  
[Report](#)

Bioactivity-ELISA



Human Growth Hormone R (GHR) Protein, His Tag (MALS verified)

Catalog # GHR-H5222



Immobilized Human GH, premium grade (Cat. No. GH1-H4118) at 2 µg/mL (100 µL/well) can bind Human GHR, His Tag (Cat. No. GHR-H5222) with a linear range of 0.2-3 ng/mL (QC tested).

Background

Growth hormone receptor (GHR) is also known as somatotropin receptor, growth hormone-binding protein (GHBR), which belongs to the type I cytokine receptor family or Type 1 subfamily. GHR contains one fibronectin type-III domain. GHR / GHBR is expressed in various tissues with high expression in liver and skeletal muscle. The soluble form (GHBP) is produced by phorbol ester-promoted proteolytic cleavage at the cell surface (shedding) by ADAM17/TACE. GHR is receptor for pituitary gland growth hormone involved in regulating postnatal body growth. On ligand binding, couples to the JAK2/STAT5 pathway. The soluble form (GHBP) acts as a reservoir of growth hormone in plasma and may be a modulator/inhibitor of GH signaling.

