

Datasheet

Human GPD1 / GPD-C Protein

Catalog # GP1-H5148

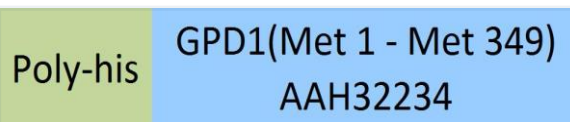
For Research Use Only

Description

Source Human GPD1, His Tag (GP1-H5148) is expressed from E.coli cells. It contains AA Met 1 - Met 349 (Accession # AAH32234).
Predicted N-terminus: Met

Predicted N-terminus Met

Protein Structure



Molecular Characterization This protein carries a polyhistidine tag at the N-terminus. The protein has a calculated MW of 38.4 kDa. The protein migrates as 34 kDa under reducing (R) condition (SDS-PAGE).

Endotoxin Less than 1.0 EU per µg by the LAL method.

Purity >95% as determined by SDS-PAGE.

Formulation and Storage

Formulation Lyophilized from 0.22 µm filtered solution in 50 mM Tris, 150 mM NaCl, pH8.0. Normally trehalose is added as protectant before lyophilization.

Contact us for customized product form or formulation.

Reconstitution Please see Certificate of Analysis for specific instructions. For best performance, we strongly recommend you to follow the reconstitution protocol provided in the CoA.

Storage For long term storage, the product should be stored at lyophilized state at -20°C or lower. Please avoid repeated freeze-thaw cycles.

No activity loss was observed after storage at:

- 4-8°C for 12 months in lyophilized state;
- -70°C for 3 months under sterile conditions after reconstitution.

Background

Background Glycerol-3-phosphate dehydrogenase [NAD(+)], cytoplasmic (GPD1), a member of the NAD-dependent glycerol-3-phosphate dehydrogenase family, is also known as GPD-C or GPDH-C. The function of GPD1 is inhibited by zinc ions and sulfate. GPD1 can also interact selectively and non-covalently with nicotinamide adenine dinucleotide (NAD), a coenzyme involved in many redox and biosynthetic reactions; binding may be to either the oxidized form, NAD⁺, or the reduced form, NADH. Mutations in GPD1 gene are a cause of Hypertriglyceridemia, transient infantile (HTGIT).

References (1) Basel-Vanagaite L., et al., 2012, Am. J. Hum. Genet. 90:49-60.
(2) Ou X., et al., 2006, J. Mol. Biol. 357:858-869.

Please contact us at TechSupport@acrobiosystems.com, if you have any questions about this product.

Datasheet

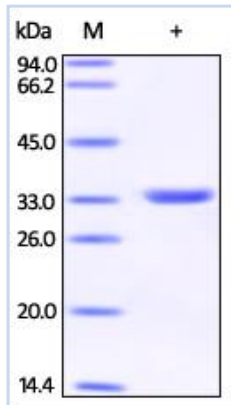
Human GPD1 / GPD-C Protein

Catalog # GP1-H5148

For Research Use Only

Assay Data

SDS-PAGE Data



Human GPD1, His Tag on SDS-PAGE under reducing (R) condition. The gel was stained overnight with Coomassie Blue. The purity of the protein is greater than 95%.