



Synonym

IFN-alpha 1,IFNA1,IFNalpha 1,IFN-alpha-1,LeIF D

Source

Human IFN-alpha 1, Fc Tag(IFA-H5258) is expressed from human 293 cells (HEK293). It contains AA Cys 24 - Glu 189 (Accession # [P01562-1](#)).

Predicted N-terminus: Cys 24

Molecular Characterization

| | |
|-------------------------------------|---------------------------------|
| IFNA1(Cys 24 - Glu 189) P01562-1 | Fc(Pro 100 - Lys 330) P01857 |
|-------------------------------------|---------------------------------|

This protein carries a human IgG1 Fc tag at the C-terminus.

The protein has a calculated MW of 45.8 kDa. The protein migrates as 45-50 kDa under reducing (R) condition (SDS-PAGE) due to glycosylation.

Endotoxin

Less than 1.0 EU per µg by the LAL method / rFC method.

Purity

>95% as determined by SDS-PAGE.

>90% as determined by SEC-MALS.

Formulation

Lyophilized from 0.22 µm filtered solution in 50 mM Tris, 100 mM Glycine, 150 mM NaCl, pH7.5 with trehalose as protectant.

Contact us for customized product form or formulation.

Reconstitution

Please see Certificate of Analysis for specific instructions.

For best performance, we strongly recommend you to follow the reconstitution protocol provided in the CoA.

Storage

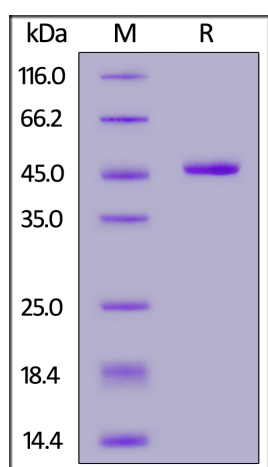
For long term storage, the product should be stored at lyophilized state at -20°C or lower.

Please avoid repeated freeze-thaw cycles.

This product is stable after storage at:

- -20°C to -70°C for 12 months in lyophilized state;
- -70°C for 3 months under sterile conditions after reconstitution.

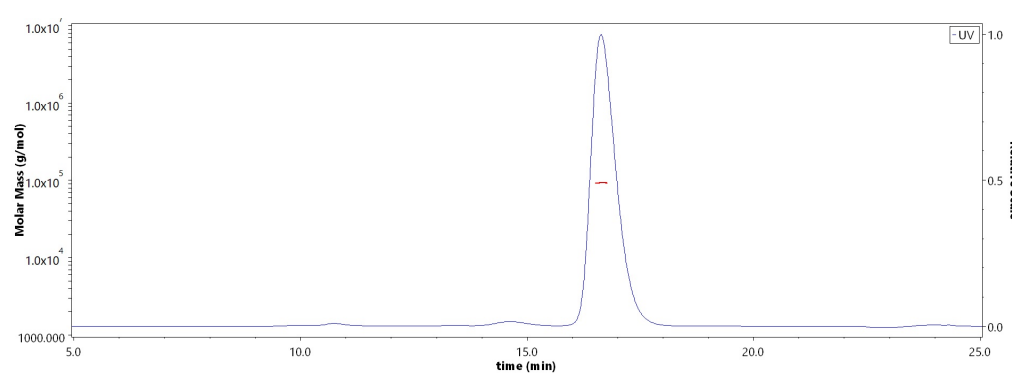
SDS-PAGE



Human IFN-alpha 1, Fc Tag on SDS-PAGE under reducing (R) condition. The gel was stained with Coomassie Blue. The purity of the protein is greater than 95%.

Bioactivity-BLI

SEC-MALS

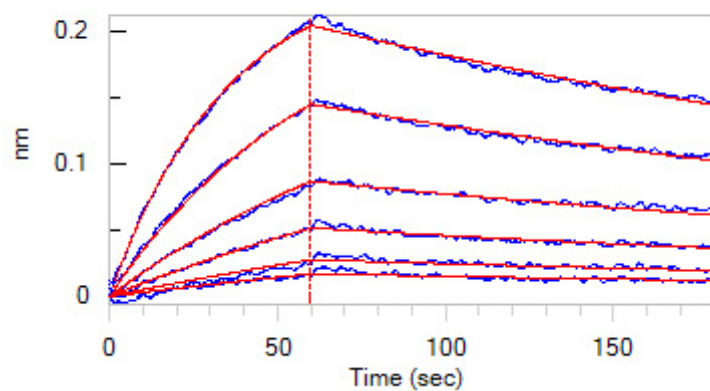


The purity of Human IFN-alpha 1, Fc Tag (Cat. No. IFA-H5258) is more than 90% and the molecular weight of this protein is around 90-118 kDa verified by SEC-MALS.

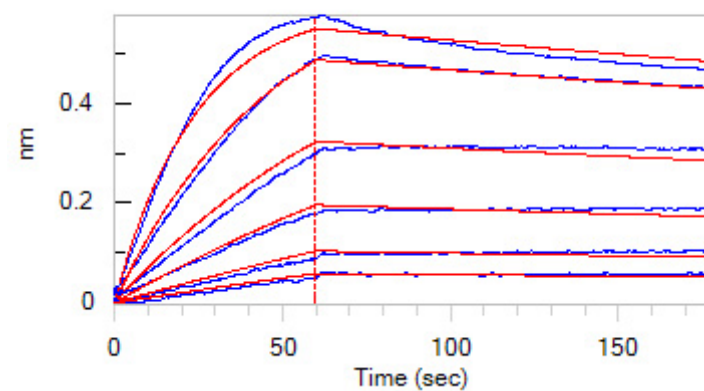
[Report](#)

Discounts, Gifts,
and more!





Loaded Human IFN-alpha / beta R1, His Tag (Cat. No. IF1-H5225) on NTA Biosensor, can bind Human IFN-alpha 1, Fc Tag (Cat. No. IFA-H5258) with an affinity constant of 11.3 nM as determined in BLI assay (ForteBio Octet Red96e) (QC tested).



Loaded Human IFNAR2, His Tag (Cat. No. IF2-H5224) on HIS1K Biosensor, can bind Human IFN-alpha 1, Fc Tag (Cat. No. IFA-H5258) with an affinity constant of 2.67 nM as determined in BLI assay (ForteBio Octet Red96e) (Routinely tested).

Background

Interferon alpha-1 is also known as IFN-alpha-1/13, Interferon alpha-D, LeIF D and IFNA1, belongs to the alpha / beta interferon family. Interferons alpha-1 and alpha-13 have identical protein sequences. Produced by macrophages, IFN-alpha have antiviral activities. Interferon stimulates the production of two enzymes: a protein kinase and an oligoadenylate synthetase. IFN-alpha can either suppress or promote the development of autoimmune diabetes. It is likely that IFN-alpha plays a complex role in the etiology of type 1 diabetes.

Discounts, Gifts,
and more!

