

Cynomolgus LAG-3 / CD223 Protein, Mouse IgG2a Fc Tag

Catalog # LA3-C52A0

For Research Use Only

Description

Source Cynomolgus LAG-3 / CD223, Mouse IgG2a Fc Tag (LA3-C52A0) is expressed from human 293 cells (HEK293). It contains AA Ala 18 - His 449 (Accession # XP_005570011.1). Predicted N-terminus: Ala 18

Predicted N-terminus Ala 18

Protein Structure

| | |
|---|---------------------------------|
| LAG-3(Ala 18 - His 449) XP_005570011.1 | mFc(Glu 98 - Lys 330) P01863 |
|---|---------------------------------|

Molecular Characterization This protein carries a mouse IgG2a Fc tag at the C-terminus. The protein has a calculated MW of 73.5 kDa. The protein migrates as 95 kDa under reducing (R) condition (SDS-PAGE) due to glycosylation.

Endotoxin Less than 1.0 EU per µg by the LAL method.

Purity >90% as determined by SDS-PAGE.

Bioactivity Measured by its binding ability in a functional ELISA. Immobilized Cynomolgus LAG-3, Mouse IgG2a Fc tag (Cat. No. LA3-C52A0) at 2 µg/mL (100 µL/well) can bind Madarex LAG-3 Mab, Human IgG1 with a linear range of 20-78 ng/mL (QC tested).

Formulation and Storage

Formulation Lyophilized from 0.22 µm filtered solution in 50 mM Tris, 100 mM Glycine, pH7.5. Normally trehalose is added as protectant before lyophilization.

Contact us for customized product form or formulation.

Reconstitution Please see Certificate of Analysis for specific instructions. For best performance, we strongly recommend you to follow the reconstitution protocol provided in the CoA.

Storage For long term storage, the product should be stored at lyophilized state at -20°C or lower. Please avoid repeated freeze-thaw cycles.

No activity loss was observed after storage at:

- 4-8°C for 12 months in lyophilized state;
- -70°C for 3 months under sterile conditions after reconstitution.

Background

Background Lymphocyte activation gene 3 protein (LAG3) is also known as CD antigen CD223 and protein FDC, which belongs to immunoglobulin (Ig) superfamily and contains 4 extracellular Ig-like domains. The LAG3 gene contains 8 exons. The sequence data, exon/intron organization, and chromosomal localization all indicate a close relationship of LAG3 to CD4. LAG3 /CD223 involved in lymphocyte activation. LAG3 /CD223 binds to HLA class-II antigens.

References

- (1) Triebel F., et al., 1990, J. Exp. Med. 171:1393-1405.
- (2) Baixeras E., et al., 1992, J. Exp. Med. 176:327-337.

Please contact us at TechSupport@acrobiosystems.com, if you have any questions about this product.

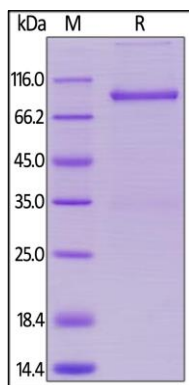
Cynomolgus LAG-3 / CD223 Protein, Mouse IgG2a Fc Tag

Catalog # LA3-C52A0

For Research Use Only

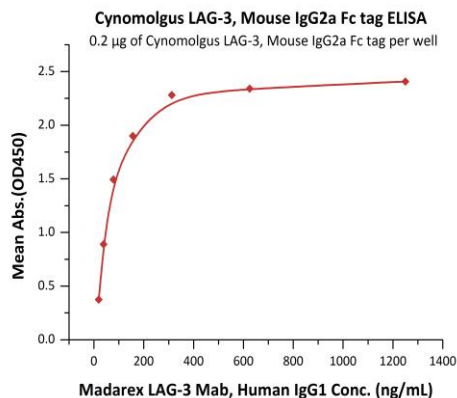
Assay Data

SDS-PAGE Data



Cynomolgus LAG-3 / CD223, Mouse IgG2a Fc Tag on SDS-PAGE under reducing (R) condition. The gel was stained overnight with Coomassie Blue. The purity of the protein is greater than 90%.

Bioactivity Data



Immobilized Cynomolgus LAG-3, Mouse IgG2a Fc tag (Cat. No. LA3-C52A0) at 2 µg/mL (100 µL/well) can bind Madarex LAG-3 Mab, Human IgG1 with a linear range of 20-78 ng/mL (QC tested).