



Product Details

Laminin 521 (LN521) is a recombinant human protein that provides a defined surface for in vitro feeder-free culture of multiple human pluripotent stem cells (PSCs). LN521 has been proven to maintain normal growth characteristics and stemness in multiple PSC lines without simultaneous differentiation, which includes ESC, iPSC, MSC etc. In addition, LN521 has been demonstrated to support PSC growth for >10 passages without any signs of karyotypic abnormalities and to maintain the ability of PSCs to differentiate into all three germ line lineages.

Flexible & Compatible

Laminin 521 could work well in any commercial stem cell media. Meanwhile, it could support the attachment and expansion of hPSCs both in single cells or small colonies.

Stemness maintenance

Laminin 521 is the biologically relevant hPSCs extracellular matrix. It is crucial for the growth and stemness maintenance of hPSCs in human through its binding to cell receptors $\alpha 6 \beta 1$ integrin.

Enhance cell differentiation

Due to the diverse biorelevant environment, laminin 521 could also enhance cell differentiation, polarization and organization of target cell types, including neuron, hepatocytes, cardiomyocytes, retinal pigmented epithelial cells, pancreatic β -cells and so on.

Reduce Variability

LN521 is a defined, recombinant human protein with better lot-to-lot consistency that reduces variability in your PSC cultures.

Key parameter

Purity (SDS PAGE)	> 95%
Mycoplasma Test	Negative
Sterility Test	Negative
Endotoxin Test	< 0.01 EU per μ g
Host Cell Protein	< 0.5 ng/ μ g
Host Cell DNA	< 0.02 ng/ μ g

Formulation

Supplied as 0.2 μ m filtered solution in PBS, pH7.4 with trehalose as protectant.

Contact us for customized product form or formulation.

Shipping

This product is supplied and shipped with blue ice, please inquire the shipping cost.

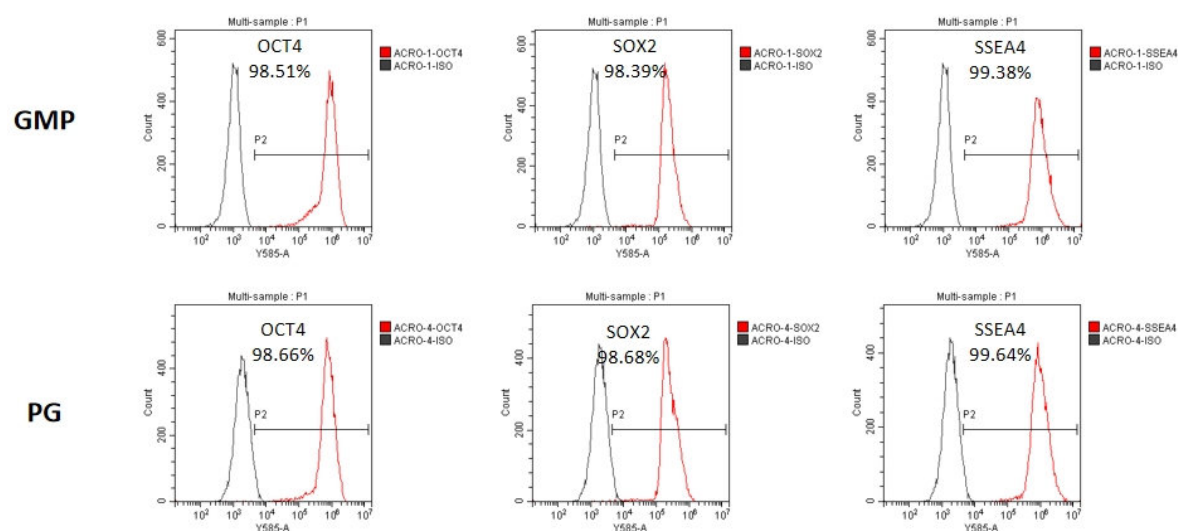
Storage

Please avoid repeated freeze-thaw cycles.

This product is stable after storage at:

- -20°C or below for 12 months under sterile conditions;
- 1 month at 2-8°C after thaw if within expiry date.

Bioactivity-Stem Cell Culture



GMP Human Laminin 521 Protein (Liquid) (Cat. No. GMP-LA5H24GA02) and Human Laminin 521 Protein, premium grade (Liquid) (Cat. No. LA5-H5213L) could maintain the stemness of iPSC at least Passage 5, with high expression of stem cell genes OCT4, SOX2 and NANOG in FACS.

Discounts, Gifts, and more!

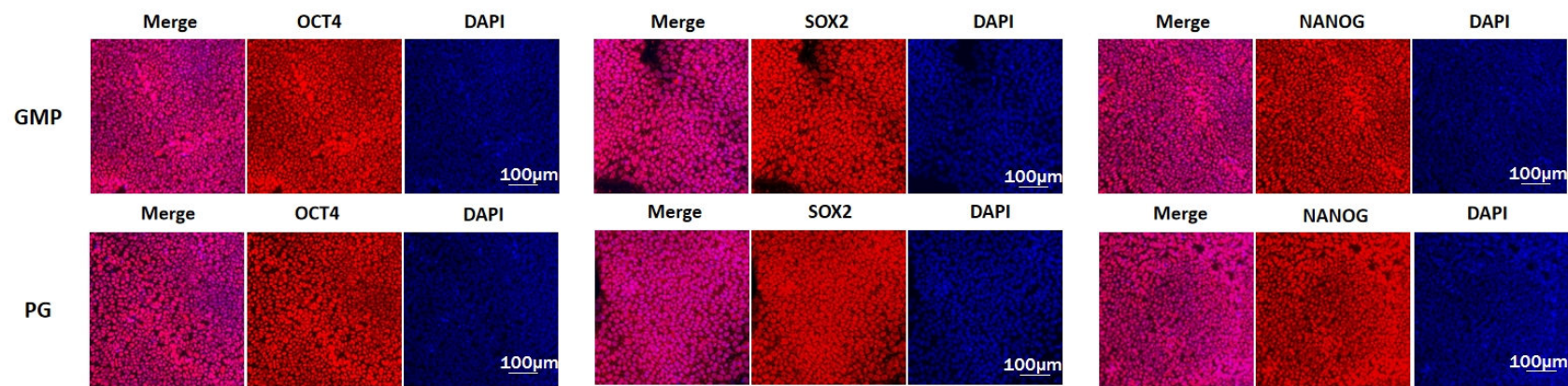


Human Laminin 521 Protein, premium grade (Liquid)

Catalog # LA5-H5213L

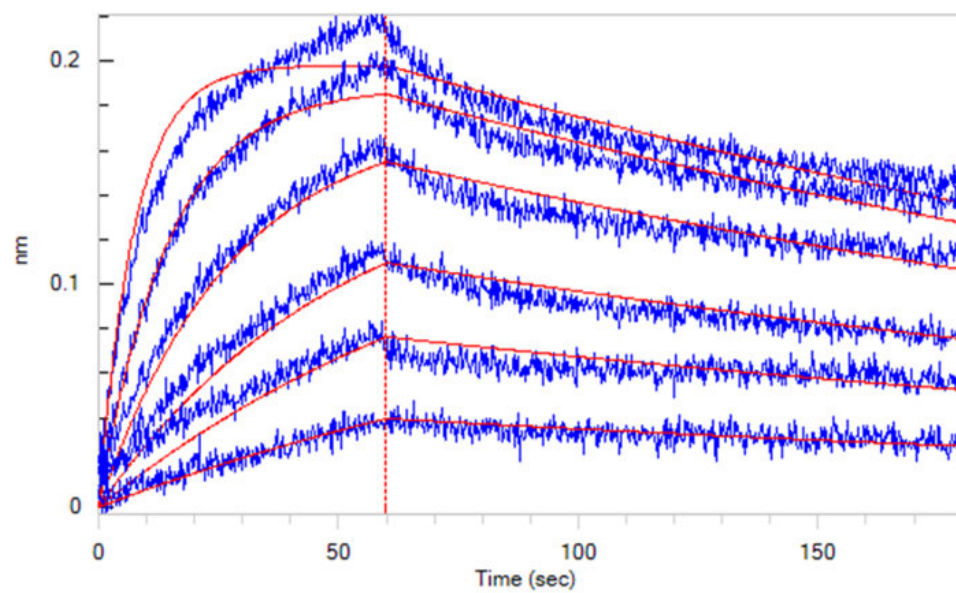


BIOSYSTEMS
Acro



GMP Human Laminin 521 Protein (Liquid) (Cat. No. GMP-LA5H24GA02) and Human Laminin 521 Protein, premium grade (Liquid) (Cat. No. LA5-H5213L) could maintain the stemness of iPSC at least Passage 5, with high expression of stem cell genes OCT4, SOX2 and NANOG in immunofluorescence.

Bioactivity-BLI



Loaded Human ITGA6&ITGB1 Heterodimer Protein, His Tag&Tag Free (Cat. No. IT1-H52W7) on HIS1K Biosensor, can bind Human Laminin 521 Protein, premium grade (Liquid) (Cat. No. LA5-H5213L) with an affinity constant between 0.50 nM - 5.00 nM as determined in BLI assay (ForteBio Octet Red96e) (QC tested).

Discounts, Gifts,
and more!



➤ www.acrobiosystems.com